

# SMD Power Inductor

## CDRH10D48RMN



新推荐品

### 特点

- 铁氧体磁芯结构
- 磁屏蔽型
- 长x宽x高: 10.5×10.3×5.1mm Max.
- 产品重量: 1.9g(参考)
- 潮湿敏感度等级: 1

### 环境规格

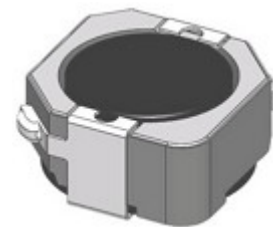
- 使用温度范围: -40℃~+125℃ (包括自我温度上升)
- 保存温度范围: -40℃~+125℃

### 包装

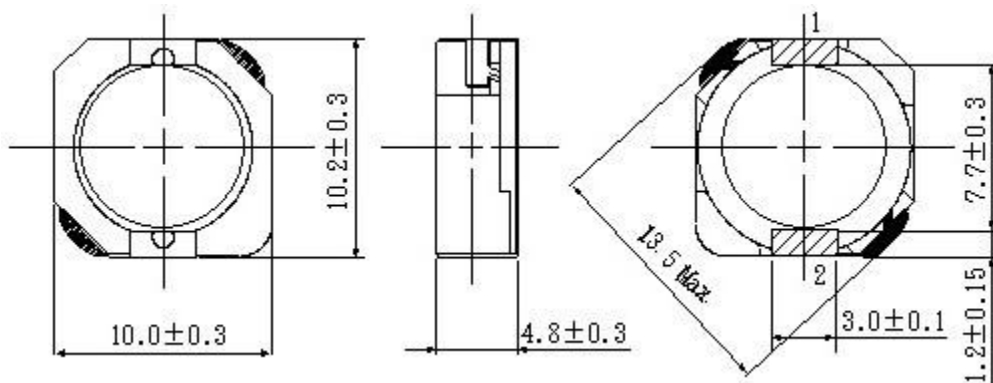
- 载带和卷盘包装: 卷轴直径13.0", 500个/reel

### 用途

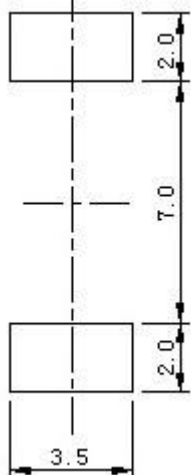
- LCD驱动器, DSC/DVC, 笔记本电脑等作为DC-DC转换电感器



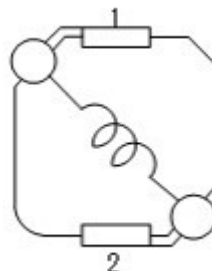
### 外形尺寸 - [mm]



### 推荐焊盘尺寸 - [mm]



### 接线图 (底面)



注: 记载内容如有变更, 恕不另行通知。订货时请联系您最近的销售办事处以获取最新产品信息。



### 电气特性规格

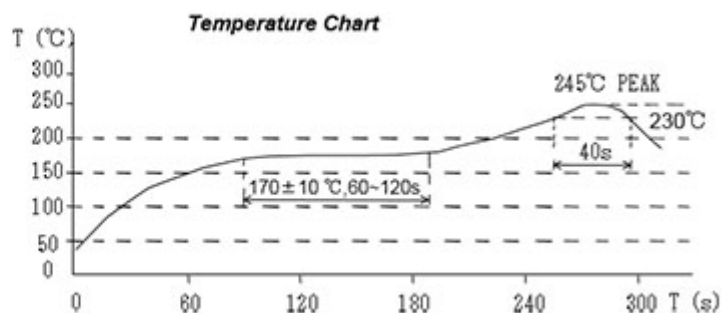
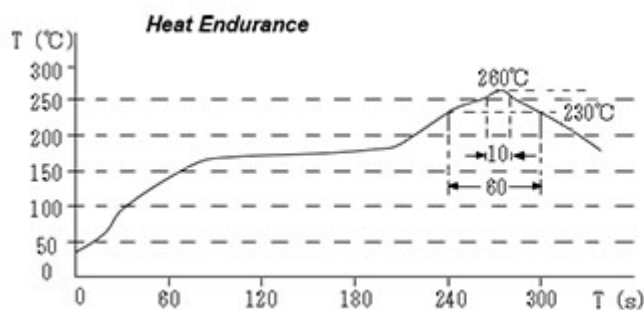
品名	电感值 [within] ( $\mu$ H) ※1	直流电阻 (20℃) Max. (Typ.) (m $\Omega$ )	饱和电流 (A) Max. (Typ.) ※2	温度上升电流 (A) Max. (Typ.) ※3
CDRH10D48RMNNP-100PC	10.00 $\pm$ 25%	30.00 (23.10)	5.56 (6.90)	(4.90)
CDRH10D48RMNNP-150PC	15.00 $\pm$ 25%	41.00 (31.40)	4.44 (5.50)	(4.09)
CDRH10D48RMNNP-220PC	22.00 $\pm$ 25%	61.00 (47.40)	3.74 (4.60)	(3.25)
CDRH10D48RMNNP-330PC	33.00 $\pm$ 25%	86.00 (66.40)	2.95 (3.60)	(2.67)
CDRH10D48RMNNP-470PC	47.00 $\pm$ 25%	130 (100)	2.54 (3.10)	(2.39)
CDRH10D48RMNNP-680PC	68.00 $\pm$ 25%	201 (155)	2.13 (2.60)	(1.82)
CDRH10D48RMNNP-101PC	100 $\pm$ 25%	253 (195)	1.71 (2.10)	(1.49)
CDRH10D48RMNNP-151PC	150 $\pm$ 25%	370 (285)	1.38 (1.73)	(1.25)
CDRH10D48RMNNP-221PC	220 $\pm$ 25%	500 (398)	1.17 (1.46)	(1.10)
CDRH10D48RMNNP-331PC	330 $\pm$ 25%	700 (580)	0.99 (1.24)	(0.85)

※1 Measuring frequency inductance at 100kHz.

※2 Saturation current: This indicates the value of D.C. current when the inductance becomes 35% lower than its initial value.

※3 Temperature rise current: The value of D.C. current when temperature of coil increased  $\Delta T=40^{\circ}\text{C}$  ( $T_a=20^{\circ}\text{C}$ ).

### 回流焊耐热与推荐温度曲线图



# SMD Power Inductor

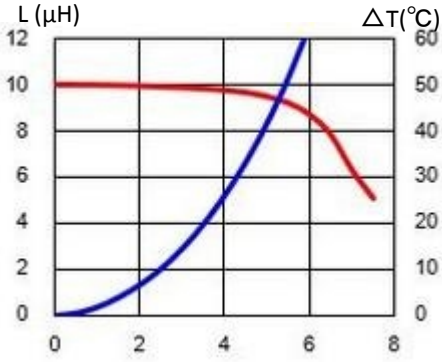
## CDRH10D48RMN



### 直流饱和电流&温度上升曲线图

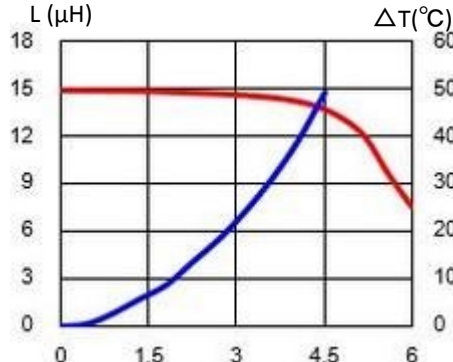
— L (20°C)      —  $\Delta T$

1. CDRH10D48RMNNP-100PC



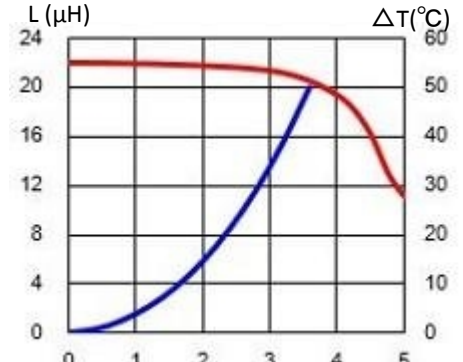
DC(A)

2. CDRH10D48RMNNP-150PC



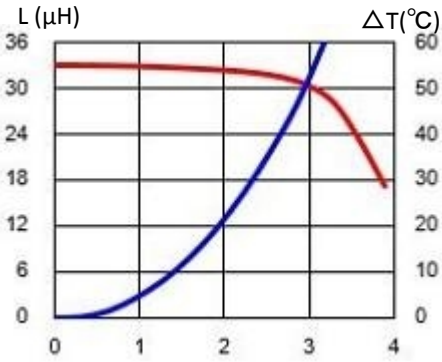
DC(A)

3. CDRH10D48RMNNP-220PC



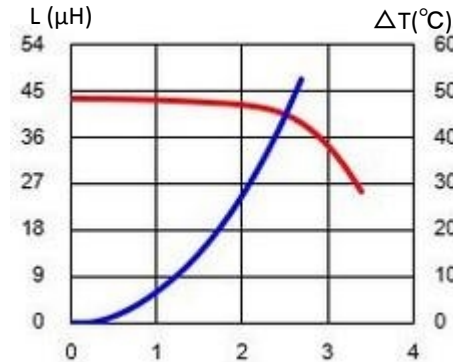
DC(A)

4. CDRH10D48RMNNP-330PC



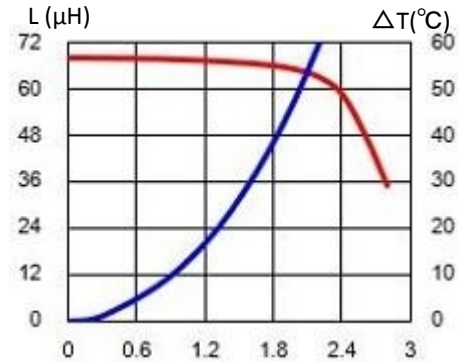
DC(A)

5. CDRH10D48RMNNP-470PC



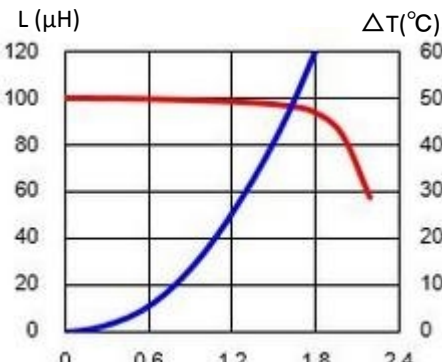
DC(A)

6. CDRH10D48RMNNP-680PC



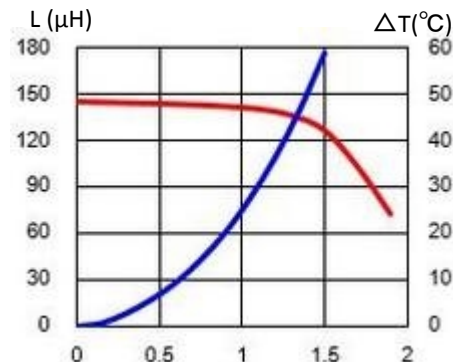
DC(A)

7. CDRH10D48RMNNP-101PC



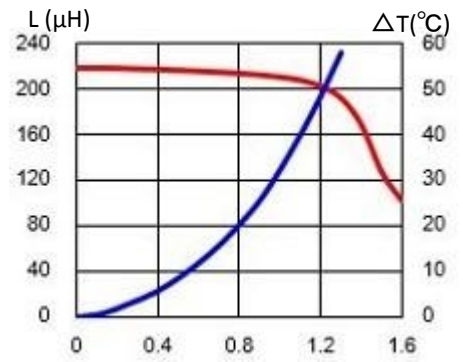
DC(A)

8. CDRH10D48RMNNP-151PC



DC(A)

9. CDRH10D48RMNNP-221PC



DC(A)

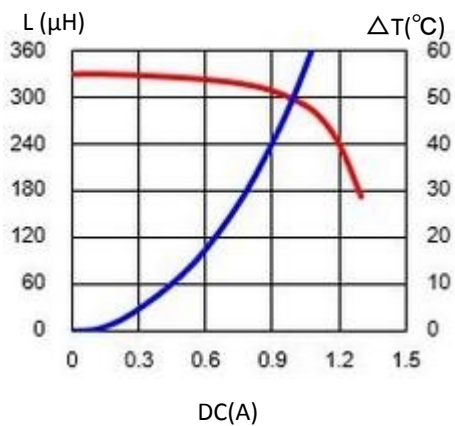
注：记载内容如有变更，恕不另行通知。订货时请联系您最近的销售办事处以获取最新产品信息。

# SMD Power Inductor

## CDRH10D48RMN



### 10. CDRH10D48RMNNP-331PC



有关销售办事处的信息，请 [点击这里](#)。