

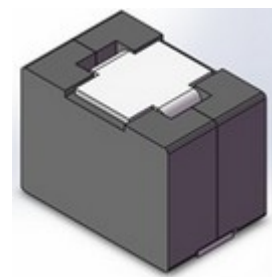
# SMD Power Inductor

## CDEPH84D92



### 特点

- Magnetically shielded
- Flat wire windings provide exceptionally low DC resistance
- L×W×H:12.7×8.7×9.5mm Max.
- Product weight: 4.45g(Ref.)
- Moisture Sensitivity Level: 1



### 环境规格

- Operating temperature range:  $-40^{\circ}\text{C} \sim +125^{\circ}\text{C}$  (Including coil's temperature rise)
- Storage temperature range :  $-40^{\circ}\text{C} \sim 125^{\circ}\text{C}$

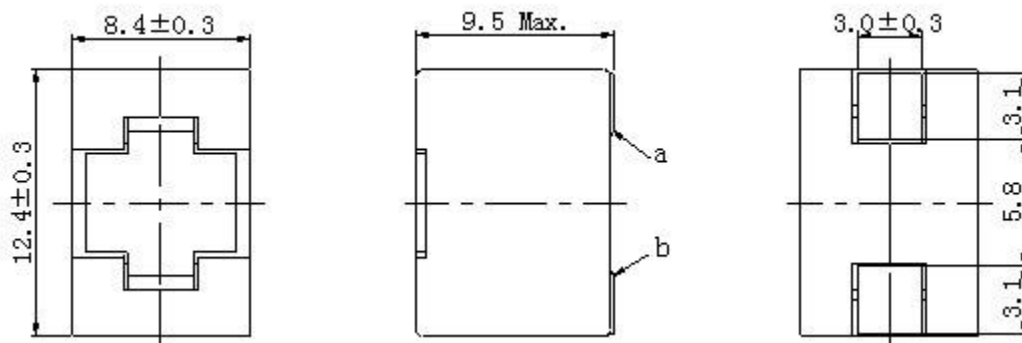
### 包装

- Carrier tape and reel packaging
- 13.0" diameter reel
- 400pcs per Reel

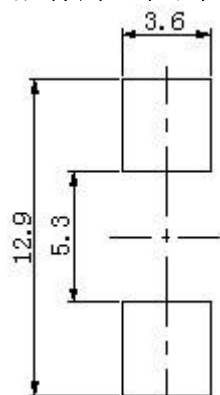
### 用途

- Server, desktop, DC-DC converters, battery powered devices, high current power supplies

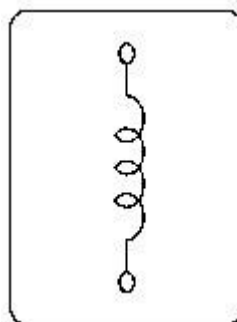
### 外形尺寸 - [mm]



### 推荐焊盘尺寸 - [mm]



### 接线图 (底面)



# SMD Power Inductor

## CDEPH84D92



### 电气特性规格

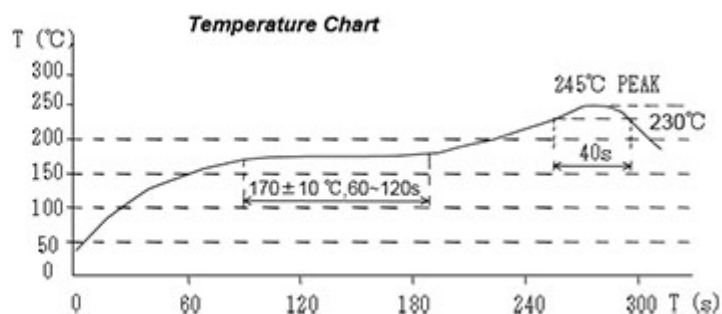
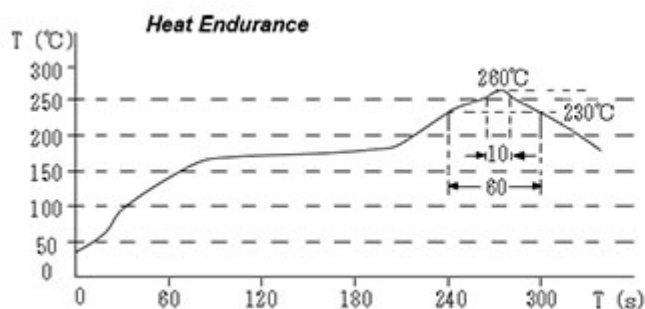
品名	电感值 [within] ( $\mu$ H) ※1	直流电阻 (20°C) Max. (Typ.) (m $\Omega$ )	饱和电流 (A) Max. (Typ.) ※2		温度上升电流 (A) Max. (Typ.) ※3
			20°C	100°C	
CDEPH84D92NP-R47LC	0.47 $\pm$ 15%	(0.27)	(40.00)	(32.00)	(47.00)

※1 Measuring frequency inductance at 1MHz.

※2 Saturation current: this indicates the value of D.C. current when the inductance becomes 20% lower than its initial value.

※3 Temperature rise current: the actual value of D.C. current when temperature of coils becomes  $\Delta T=40^{\circ}\text{C}$  ( $T_a=20^{\circ}\text{C}$ ).

### 回流焊耐热与推荐温度曲线图



# SMD Power Inductor

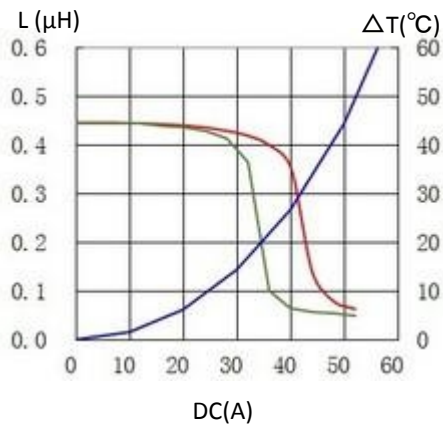
## CDEPH84D92



### 直流饱和电流&温度上升曲线图

— L (20°C) — L (100°C) —  $\Delta T$

1. CDEPH84D92NP-R47LC



有关销售办事处的信息，请 [点击这里](#)。