

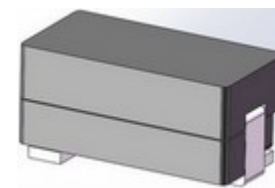
SMD Power Inductor

CDB97D98B



特点

- 铁氧体磁芯结构
- 磁屏蔽型
- 长x宽x高: 20.0×10.0×10.0mm Max
- 产品重量: 8.1g (参考)
- 潮湿敏感度等级: 1



环境规格

- 使用温度范围: -40°C~+125°C (包括线圈自身温升)
- 保存温度范围: -40°C~+125°C

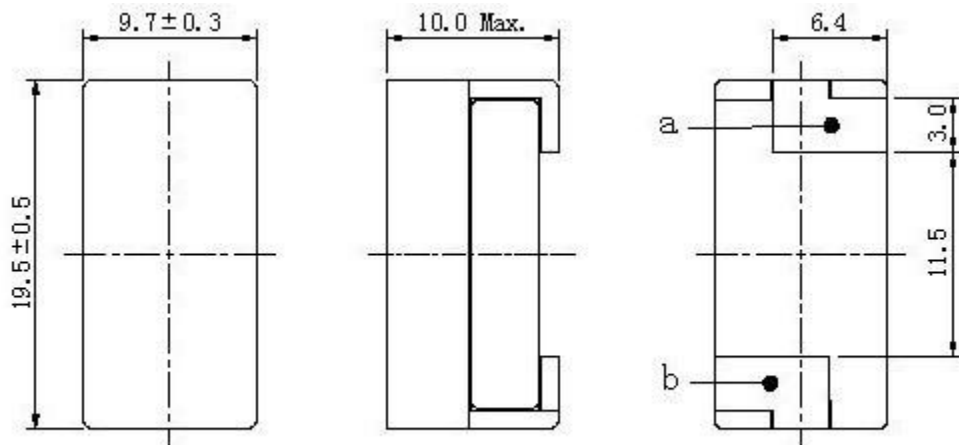
包装

- 载带和卷盘包装: 卷轴直径13.0", 350个/reel

用途

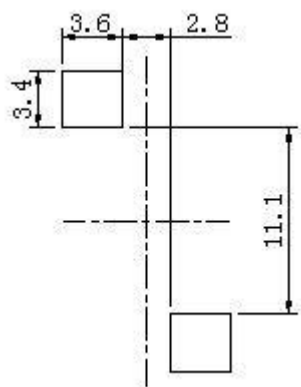
- 广泛应用于多相/多芯稳压器、电压调节模块 (VRMS), 如服务器和桌面、中央处理器 (CPU)、图形处理单元 (GPU)、专用集成电路 (ASIC)、显卡和电池供电系统

外形尺寸 - [mm]

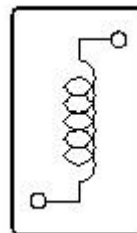


* The DCR is measured from point "a" to "b".

推荐焊盘尺寸 - [mm]



接线图 (底面)



SMD Power Inductor

CDB97D98B



电气特性规格

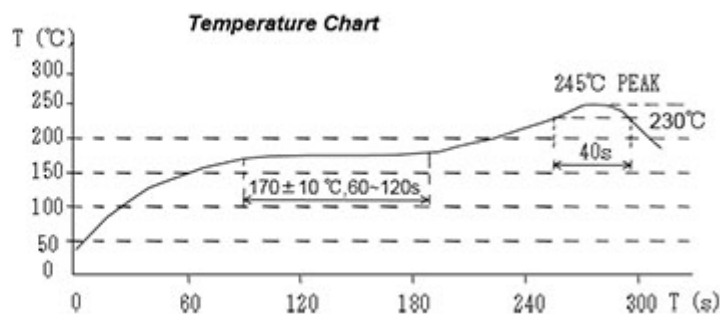
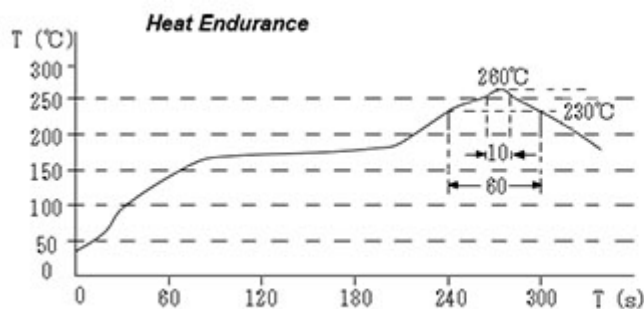
| 品名 | 电感值 [within] (μ H) ※1 | 直流电阻 (20℃) Max. (Typ.) (m Ω) | 饱和电流 (A) Max. (Typ.) ※2 | | 温度上升电流 (A) Max. (Typ.) ※3 |
|-------------------|----------------------------------|---|----------------------------|------------------|---------------------------------|
| | | | 20℃ | 105℃ | |
| CDB97D98BHF-R33MC | 0.33 \pm 20% | 0.17 \pm 15% | 65.50 (82.00) | 48.00 (60.00) | (75.00) |

※1 Measuring frequency inductance at 1MHz.

※2 Saturation current: This indicates the value of D.C. current when the inductance becomes 20% lower than its initial value.

※3 Temperature rise current: The value of D.C. current when temperature of coil increased $\Delta T=40^{\circ}\text{C}$ ($T_a=20^{\circ}\text{C}$).

回流焊耐热与推荐温度曲线图



SMD Power Inductor

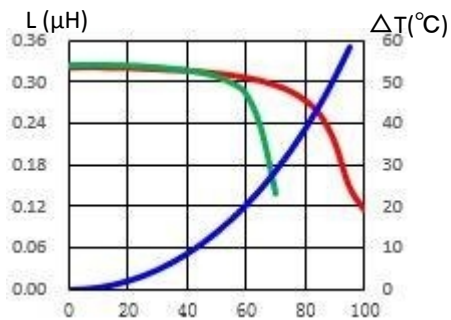
CDB97D98B



直流饱和电流&温度上升曲线图

— L (20°C) — L (125°C) — ΔT

1. CDB97D98BHF-R33MC



DC(A)



有关销售办事处的信息，请[点击这里](#)。